



Metal Laboratory Casework

PRODUCT CATALOG





Since 1975, Air Master Systems has manufactured chemical fume hoods, filtration hoods, and laboratory furniture for the research & development, institutional, industrial, government and biotech markets.



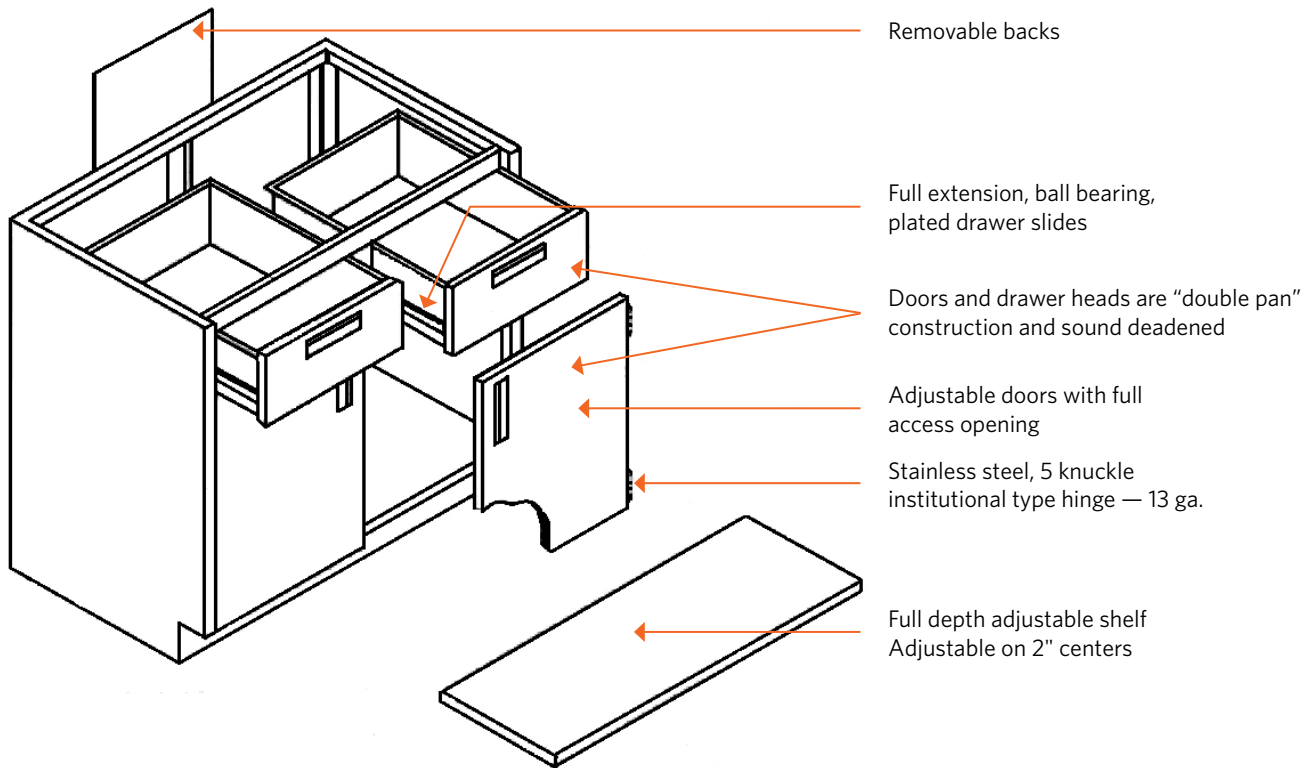
contents

Cabinet Specifications	4
Options Menu	5
Base Cabinets — Standing Height	7
Open Cabinets	7
Door Cabinets	7
Drawer Cabinets	8
Door/Drawer Cabinets	12
Corner Cabinets	18
Sink & Fume Hood Cabinets	19
Base Cabinets — Sitting Height	21
Open Cabinets	21
Door Cabinets	21
Drawer Cabinets	22
Door/Drawer Cabinets	25
Corner Cabinets	29
Sink & Fume Hood Cabinets	30
Base Cabinets — ADA Height	31
Open Cabinets	31
Door Cabinets	31
Drawer Cabinets	32
Door/Drawer Cabinets	33
Corner Cabinets	34
Sink & Fume Hood Cabinets	35
Base Cabinets — Corrosives & Flammables	37
Corrosives Storage Cabinets	37
Flammables Storage Cabinets	37
Mobile Cabinets	38
Hanging Cabinets	39
Tall Cabinets	40
Wall Cabinets — 24" Height	42
Wall Cabinets — 30" Height	44
Wall Cabinets — 36" Height	46
Wall Cabinets — 48" Height	48
Aprons	50
Knee Space Rails and Panels	51
Filler Panels	52
Accessories	54
Utility Tables	55

Note:

Images in this catalog are for representation only. For complete product specifications, contact your AMS representative.

cabinet specifications



All surfaces shall be painted or zinc plated. The paint is chemical and UV resistant baked on epoxy-hybrid powder. Specific test data is available upon request.

Gauges of base cabinet components

Aprons	18 ga.
Back Panels	18 ga.
Bottom Panels	18 ga.
Drawer/Door Outer Panel	20 ga.
Door Inner Panel	20 ga.
Drawer Bodies	20 ga.
Legs - 2"sq. tube	16 ga.
Shelves	12 ga.
Side Panels	18 ga.
Table Frames	18 ga.
Security Panels	20 ga.

For complete specifications, request our full line of product specifications. Subject to change.

options menu

DOOR AND DRAWER FRONTS



- Inset steel
(Standard Default)



- Flush overlay

DRAWER SLIDES



- 100 lb. full extension
(Standard Default)
- 100 lb. full extension
soft close



- 130 lb. full extension
- 200 lb. full extension

HINGES AND ROLLERS



- Stainless steel 5-knuckle
(Standard Default)
- Inset steel



- Stainless steel 5-knuckle
(Standard Default)
- Flush overlay

MAGNETIC CATCH



- Magnetic catch
(Standard Default)
- Roller catch

LOCKS



- Master 5-disc
(Standard Default)
- Master 5-pin

options menu

PULLS



Rectangular brushed aluminum



Recessed aluminum
 Painted recessed aluminum
AMS standard colors available



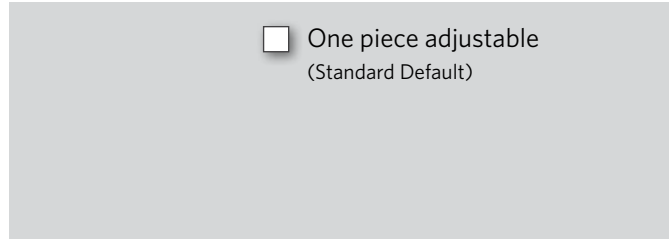
Aluminum wire pulls
 Stainless steel wire pulls

LABEL HOLDERS



None
(Standard Default)
 One each door and drawer
 One per pair of doors/drawers

BASE UNIT SHELF



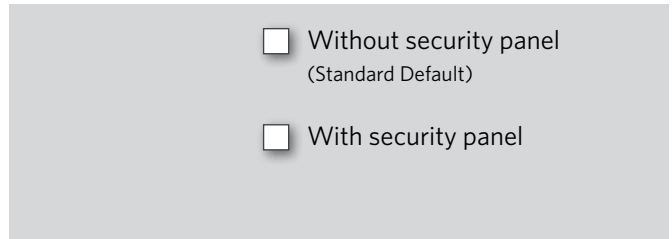
One piece adjustable
(Standard Default)

GLASS FRAMED DOORS



6mm clear float glass
(Standard Default)
 6mm laminated safety glass
 6mm tempered safety glass

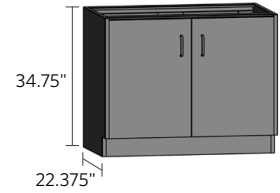
SECURITY PANELS



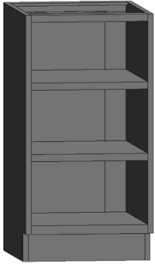
Without security panel
(Standard Default)
 With security panel

base cabinets — standing height

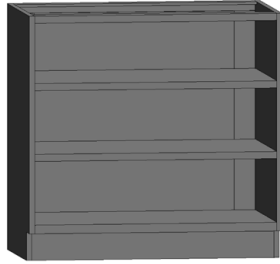
Standing height base cabinets are 34.75" high and 22.375" deep. Units are available in various widths as shown. Drawer units feature 100 lb. full extension slides as standard. Door units feature a single shelf as standard. Additional shelves are available. Specify left- or right-hinged doors using the suffix "L" or "R". If locks are required use the suffix "LK".



OPEN CABINETS



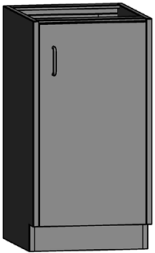
Up to 24" wide



30" and wider

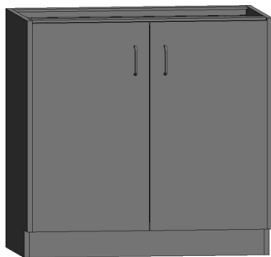
Width	Item Number
12"	SB3512-000
15"	SB3515-000
18"	SB3518-000
24"	SB3524-000
30"	SB3530-000
36"	SB3536-000
42"	SB3542-000
48"	SB3548-000

DOOR CABINETS

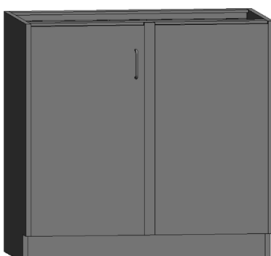


Right-hinged door shown

Width	Right hinged	Left hinged
12"	SB3512-100R	SB3512-100L
15"	SB3515-100R	SB3515-100L
18"	SB3518-100R	SB3518-100L
24"	SB3524-100R	SB3524-100L



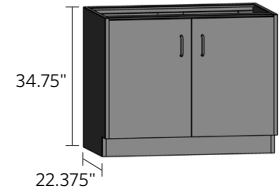
Width	Item Number
30"	SB3530-200
36"	SB3536-200
42"	SB3542-200
48"	SB3548-200



Width	Right hinged	Left hinged
30"	SB3530-100RSP	SB3530-100LSP
36"	SB3536-100RSP	SB3536-100LSP
42"	SB3542-100RSP	SB3542-100LSP
48"	SB3548-100RSP	SB3548-100LSP

base cabinets — standing height

Standing height base cabinets are 34.75" high and 22.375" deep. Units are available in various widths as shown. Drawer units feature 100 lb. full extension slides as standard. Door units feature a single shelf as standard. Additional shelves are available. Specify left- or right-hinged doors using the suffix "L" or "R". If locks are required use the suffix "LK".



DRAWER CABINETS



Up to 24" wide



30" and wider

Width	Item Number
12"	SB3512-F20
15"	SB3515-F20
18"	SB3518-F20
24"	SB3524-F20
30"	SB3530-F20
36"	SB3536-F20
42"	SB3542-F20
48"	SB3548-F20



Up to 24" wide



30" and wider

Width	Item Number
12"	SB3512-030
15"	SB3515-030
18"	SB3518-030
24"	SB3524-030
30"	SB3530-030
36"	SB3536-030
42"	SB3542-030
48"	SB3548-030



Up to 24" wide



30" and wider

Width	Item Number
12"	SB3512-040
15"	SB3515-040
18"	SB3518-040
24"	SB3524-040
30"	SB3530-040
36"	SB3536-040
42"	SB3542-040
48"	SB3548-040



Up to 24" wide

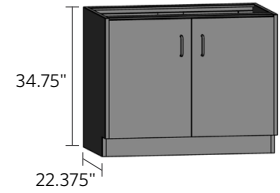


30" and wider

Width	Item Number
12"	SB3512-050
15"	SB3515-050
18"	SB3518-050
24"	SB3524-050
30"	SB3530-050
36"	SB3536-050
42"	SB3542-050
48"	SB3548-050

base cabinets — standing height

Standing height base cabinets are 34.75" high and 22.375" deep. Units are available in various widths as shown. Drawer units feature 100 lb. full extension slides as standard. Door units feature a single shelf as standard. Additional shelves are available. Specify left- or right-hinged doors using the suffix "L" or "R". If locks are required use the suffix "LK".



DRAWER CABINETS



Up to 24" wide



30" and wider

Width	Item Number
12"	SB3512-032
15"	SB3515-032
18"	SB3518-032
24"	SB3524-032
30"	SB3530-032
36"	SB3536-032
42"	SB3542-032
48"	SB3548-032



30" and wider

Width	Item Number
30"	SB3530-032A
36"	SB3536-032A
42"	SB3542-032A
48"	SB3548-032A



Up to 24" wide



30" and wider

Width	Item Number
12"	SB3512-024
15"	SB3515-024
18"	SB3518-024
24"	SB3524-024
30"	SB3530-024
36"	SB3536-024
42"	SB3542-024
48"	SB3548-024



Up to 24" wide

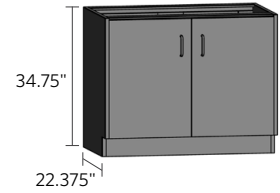


30" and wider

Width	Item Number
12"	SB3512-008
15"	SB3515-008
18"	SB3518-008
24"	SB3524-008
30"	SB3530-008
36"	SB3536-008
42"	SB3542-008
48"	SB3548-008

base cabinets — standing height

Standing height base cabinets are 34.75" high and 22.375" deep. Units are available in various widths as shown. Drawer units feature 100 lb. full extension slides as standard. Door units feature a single shelf as standard. Additional shelves are available. Specify left- or right-hinged doors using the suffix "L" or "R". If locks are required use the suffix "LK".



DRAWER CABINETS

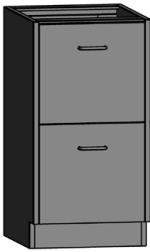


Up to 24" wide



30" and wider

Width	Item Number
12"	SB3512-F12
15"	SB3515-F12
18"	SB3518-F12
24"	SB3524-F12
30"	SB3530-F12
36"	SB3536-F12
42"	SB3542-F12
48"	SB3548-F12



Up to 24" wide



30" and wider

Width	Item Number
15"	SB3515-FF0
18"	SB3518-FF0
24"	SB3524-FF0
30"	SB3530-FF0
36"	SB3536-FF0
42"	SB3542-FF0
48"	SB3548-FF0



Up to 24" wide



30" and wider

Width	Item Number
15"	SB3515-F04
18"	SB3518-F04
24"	SB3524-F04
30"	SB3530-F04
36"	SB3536-F04
42"	SB3542-F04
48"	SB3548-F04

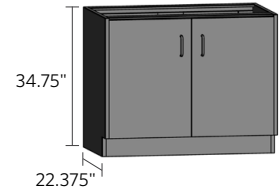


30" and wider

Width	Item Number
30"	SB3530-050A
36"	SB3536-050A
42"	SB3542-050A
48"	SB3548-050A

base cabinets — standing height

Standing height base cabinets are 34.75" high and 22.375" deep. Units are available in various widths as shown. Drawer units feature 100 lb. full extension slides as standard. Door units feature a single shelf as standard. Additional shelves are available. Specify left- or right-hinged doors using the suffix "L" or "R". If locks are required use the suffix "LK".



DRAWER CABINETS



Width	Item Number
30"	SB3530-040B
36"	SB3536-040B
42"	SB3542-040B
48"	SB3548-040B



Width	Item Number
30"	SB3530-064
36"	SB3536-064
42"	SB3542-064
48"	SB3548-064



Width	Item Number
30"	SB3530-060
36"	SB3536-060
42"	SB3542-060
48"	SB3548-060



Width	Item Number
30"	SB3530-070A
36"	SB3536-070A
42"	SB3542-070A
48"	SB3548-070A



Width	Item Number
30"	SB3530-080
36"	SB3536-080
42"	SB3542-080
48"	SB3548-080



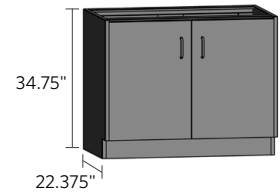
Width	Item Number
30"	SB3530-052
36"	SB3536-052
42"	SB3542-052
48"	SB3548-052



Width	Item Number
30"	SB3530-044D
36"	SB3536-044D
42"	SB3542-044D
48"	SB3548-044D

base cabinets — standing height

Standing height base cabinets are 34.75" high and 22.375" deep. Units are available in various widths as shown. Drawer units feature 100 lb. full extension slides as standard. Door units feature a single shelf as standard. Additional shelves are available. Specify left- or right-hinged doors using the suffix "L" or "R". If locks are required use the suffix "LK".



DRAWER CABINETS



Up to 24" wide



30" and wider

Width	Item Number
15"	SB3515-016
18"	SB3518-016
24"	SB3524-016
30"	SB3530-016
36"	SB3536-016
42"	SB3542-016
48"	SB3548-016



30" and wider

Width	Item Number
30"	SB3530-00(16)
36"	SB3536-00(16)
42"	SB3542-00(16)
48"	SB3548-00(16)

DOOR/DRAWER CABINETS



Right-hinged door shown

Width	Right hinged	Left hinged
12"	SB3512-110R	SB3512-110L
15"	SB3515-110R	SB3515-110L
18"	SB3518-110R	SB3518-110L
24"	SB3524-110R	SB3524-110L

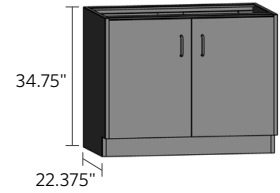


Right-hinged door shown

Width	Right hinged	Left hinged
12"	SB3512-102R	SB3512-102L
15"	SB3515-102R	SB3515-102L
18"	SB3518-102R	SB3518-102L
24"	SB3524-102R	SB3524-102L

base cabinets — standing height

Standing height base cabinets are 34.75" high and 22.375" deep. Units are available in various widths as shown. Drawer units feature 100 lb. full extension slides as standard. Door units feature a single shelf as standard. Additional shelves are available. Specify left- or right-hinged doors using the suffix "L" or "R". If locks are required use the suffix "LK".



DOOR/DRAWER CABINETS



Width	Item Number
30"	SB3530-210
36"	SB3536-210
42"	SB3542-210
48"	SB3548-210



Width	Item Number
30"	SB3530-204A
36"	SB3536-204A
42"	SB3542-204A
48"	SB3548-204A



Width	Item Number
30"	SB3530-220
36"	SB3536-220
42"	SB3542-220
48"	SB3548-220



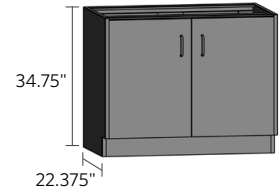
Width	Item Number
30"	SB3530-212A
36"	SB3536-212A
42"	SB3542-212A
48"	SB3548-212A



Width	Item Number
30"	SB3530-204
36"	SB3536-204
42"	SB3542-204
48"	SB3548-204

base cabinets — standing height

Standing height base cabinets are 34.75" high and 22.375" deep. Units are available in various widths as shown. Drawer units feature 100 lb. full extension slides as standard. Door units feature a single shelf as standard. Additional shelves are available. Specify left- or right-hinged doors using the suffix "L" or "R". If locks are required use the suffix "LK".



DOOR/DRAWER CABINETS



Right-hinged door shown

Width	Right hinged	Left hinged
30"	SB3530-140BR	SB3530-140BL
36"	SB3536-140BR	SB3536-140BL
42"	SB3542-140BR	SB3542-140BL
48"	SB3548-140BR	SB3548-140BL



Right-hinged door shown

Width	Right hinged	Left hinged
30"	SB3530-150R	SB3530-150L
36"	SB3536-150R	SB3536-150L
42"	SB3542-150R	SB3542-150L
48"	SB3548-150R	SB3548-150L



Right-hinged door shown

Width	Right hinged	Left hinged
30"	SB3530-150AR	SB3530-150AL
36"	SB3536-150AR	SB3536-150AL
42"	SB3542-150AR	SB3542-150AL
48"	SB3548-150AR	SB3548-150AL

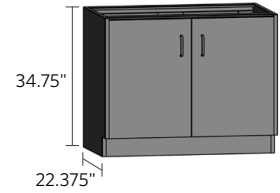


Right-hinged door shown

Width	Right hinged	Left hinged
30"	SB3530-142R	SB3530-142L
36"	SB3536-142R	SB3536-142L
42"	SB3542-142R	SB3542-142L
48"	SB3548-142R	SB3548-142L

base cabinets — standing height

Standing height base cabinets are 34.75" high and 22.375" deep. Units are available in various widths as shown. Drawer units feature 100 lb. full extension slides as standard. Door units feature a single shelf as standard. Additional shelves are available. Specify left- or right-hinged doors using the suffix "L" or "R". If locks are required use the suffix "LK".



DOOR/DRAWER CABINETS



Right-hinged door shown

Width	Right hinged	Left hinged
30"	SB3530-142AR	SB3530-142AL
36"	SB3536-142AR	SB3536-142AL
42"	SB3542-142AR	SB3542-142AL
48"	SB3548-142AR	SB3548-142AL



Right-hinged door shown

Width	Right hinged	Left hinged
30"	SB3530-132R	SB3530-132L
36"	SB3536-132R	SB3536-132L
42"	SB3542-132R	SB3542-132L
48"	SB3548-132R	SB3548-132L



Right-hinged door shown

Width	Right hinged	Left hinged
30"	SB3530-140AR	SB3530-140AL
36"	SB3536-140AR	SB3536-140AL
42"	SB3542-140AR	SB3542-140AL
48"	SB3548-140AR	SB3548-140AL

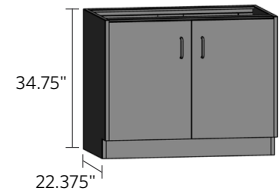


Right-hinged door shown

Width	Right hinged	Left hinged
30"	SB3530-134R	SB3530-134L
36"	SB3536-134R	SB3536-134L
42"	SB3542-134R	SB3542-134L
48"	SB3548-134R	SB3548-134L

base cabinets — standing height

Standing height base cabinets are 34.75" high and 22.375" deep. Units are available in various widths as shown. Drawer units feature 100 lb. full extension slides as standard. Door units feature a single shelf as standard. Additional shelves are available. Specify left- or right-hinged doors using the suffix "L" or "R". If locks are required use the suffix "LK".

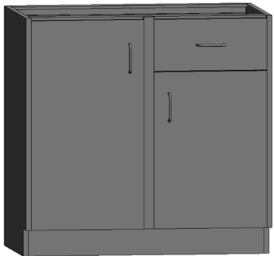


DOOR/DRAWER CABINETS



Right-hinged door shown

Width	Right hinged	Left hinged
30"	SB3530-134AR	SB3530-134AL
36"	SB3536-134AR	SB3536-134AL
42"	SB3542-134AR	SB3542-134AL
48"	SB3548-134AR	SB3548-134AL



Right-hinged door shown

Width	Right hinged	Left hinged
30"	SB3530-210AR	SB3530-210AL
36"	SB3536-210AR	SB3536-210AL
42"	SB3542-210AR	SB3542-210AL
48"	SB3548-210AR	SB3548-210AL



Right-hinged door shown

Width	Right hinged	Left hinged
30"	SB3530-212CR	SB3530-212CL
36"	SB3536-212CR	SB3536-212CL
42"	SB3542-212CR	SB3542-212CL
48"	SB3548-212CR	SB3548-212CL

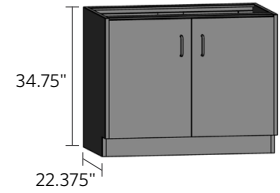


Right-hinged door shown

Width	Right hinged	Left hinged
30"	SB3530-116R	SB3530-116L
36"	SB3536-116R	SB3536-116L
42"	SB3542-116R	SB3542-116L
48"	SB3548-116R	SB3548-116L

base cabinets — standing height

Standing height base cabinets are 34.75" high and 22.375" deep. Units are available in various widths as shown. Drawer units feature 100 lb. full extension slides as standard. Door units feature a single shelf as standard. Additional shelves are available. Specify left- or right-hinged doors using the suffix "L" or "R". If locks are required use the suffix "LK".



DOOR/DRAWER CABINETS



Right-hinged door shown

Width	Right hinged	Left hinged
30"	SB3530-108R	SB3530-108L
36"	SB3536-108R	SB3536-108L
42"	SB3542-108R	SB3542-108L
48"	SB3548-108R	SB3548-108L



Right-hinged door shown

Width	Right hinged	Left hinged
30"	SB3530-126R	SB3530-126L
36"	SB3536-126R	SB3536-126L
42"	SB3542-126R	SB3542-126L
48"	SB3548-126R	SB3548-126L



Right-hinged door shown

Width	Right hinged	Left hinged
30"	SB3530-126AR	SB3530-126AL
36"	SB3536-126AR	SB3536-126AL
42"	SB3542-126AR	SB3542-126AL
48"	SB3548-126AR	SB3548-126AL

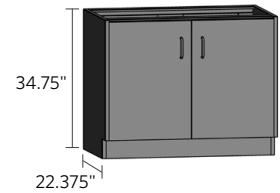


Right-hinged door shown

Width	Right hinged	Left hinged
30"	SB3530-118R	SB3530-118L
36"	SB3536-118R	SB3536-118L
42"	SB3542-118R	SB3542-118L
48"	SB3548-118R	SB3548-118L

base cabinets — standing height

Standing height base cabinets are 34.75" high and 22.375" deep. Units are available in various widths as shown. Drawer units feature 100 lb. full extension slides as standard. Door units feature a single shelf as standard. Additional shelves are available. Specify left- or right-hinged doors using the suffix "L" or "R". If locks are required use the suffix "LK".



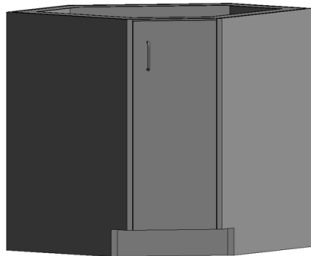
DOOR/DRAWER CABINETS



Right-hinged door shown

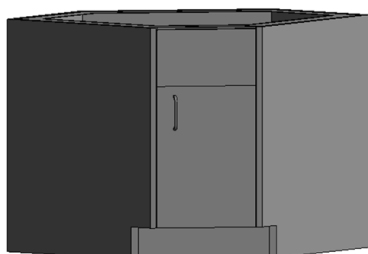
Width	Right hinged	Left hinged
30"	SB3530-118AR	SB3530-118AL
36"	SB3536-118AR	SB3536-118AL
42"	SB3542-118AR	SB3542-118AL
48"	SB3548-118AR	SB3548-118AL

CORNER CABINETS



Right-hinged door shown

Right hinged	Left hinged
SC3514-100R	SC3514-100L



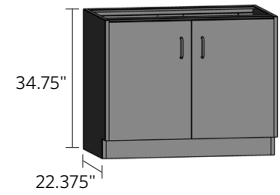
Right-hinged door shown

Right hinged	Left hinged
SC3514-10SR	SC3514-10SL

Right hinged with louvers	Left hinged with louvers
SC3514-10SAR	SC3514-10SAL

base cabinets — standing height

Standing height base cabinets are 34.75" high and 22.375" deep. Units are available in various widths as shown. Drawer units feature 100 lb. full extension slides as standard. Door units feature a single shelf as standard. Additional shelves are available. Specify left- or right-hinged doors using the suffix "L" or "R". If locks are required use the suffix "LK".



SINK & FUME HOOD CABINETS



Right-hinged door shown

Width	Right hinged	Left hinged
15"	SB3515-10SR	SB3515-10SL
18"	SB3518-10SR	SB3518-10SL
24"	SB3524-10SR	SB3524-10SL



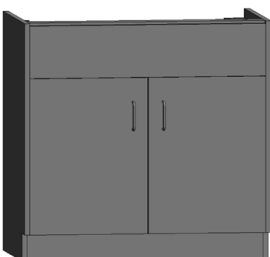
Left-hinged door shown

Width	Right hinged	Left hinged
15"	SB3515-10SAR	SB3515-10SAL
18"	SB3518-10SAR	SB3518-10SAL
24"	SB3524-10SAR	SB3524-10SAL



Right-hinged door shown

Width	Right hinged	Left hinged
15"	SB3515-10PR	SB3515-10PL
18"	SB3518-10PR	SB3518-10PL
24"	SB3524-10PR	SB3524-10PL

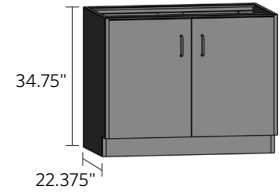


Right-hinged door shown

Width	Item Number
30"	SB3530-20S
36"	SB3536-20S
42"	SB3542-20S
48"	SB3548-20S
52"	SB3552-20S
58"	SB3558-20S

base cabinets — standing height

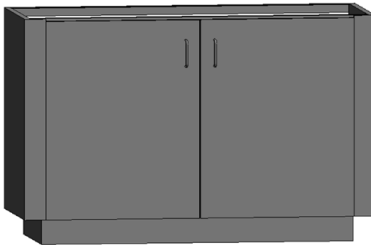
Standing height base cabinets are 34.75" high and 22.375" deep. Units are available in various widths as shown. Drawer units feature 100 lb. full extension slides as standard. Door units feature a single shelf as standard. Additional shelves are available. Specify left- or right-hinged doors using the suffix "L" or "R". If locks are required use the suffix "LK".



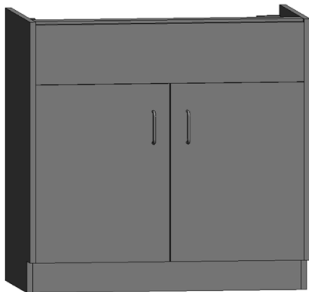
SINK & FUME HOOD CABINETS



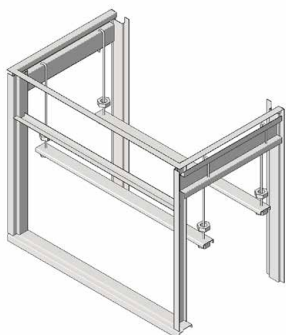
Width	Item Number
30"	SB3530-20SA
36"	SB3536-20SA
42"	SB3542-20SA
48"	SB3548-20SA
52"	SB3552-20SA
58"	SB3558-20SA



Width	Item Number
52"	SB3552-20SI
58"	SB3558-20SI



Width	Item Number
30"	SB3530-20P
36"	SB3536-20P
42"	SB3542-20P
48"	SB3548-20P
52"	SB3552-20P
58"	SB3558-20P

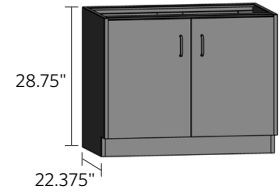


Sink Support Assembly

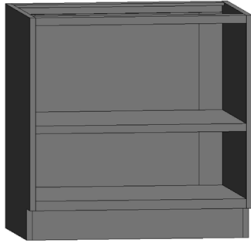
Item Number
SS-C14
SS-18
SS-24
SS-30
SS-36
SS-42
SS-48
SS-52
SS-58

base cabinets — sitting height

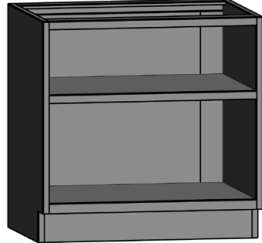
Sitting height cabinets are 28.75" high and 22.375" deep. Units are available in various widths as shown. Drawer units feature 100 lb. full extension slides as standard. Door units feature single shelf as standard. Additional shelves are available. Specify left- or right-hinged doors using the suffix "L" or "R". If locks are required, use the suffix "LK".



OPEN CABINETS



Up to 24" wide



30" and wider

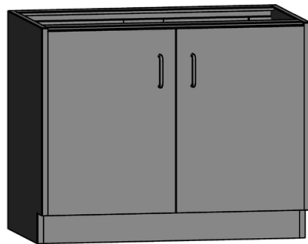
Width	Item Number
12"	SB2912-000
15"	SB2915-000
18"	SB2918-000
24"	SB2924-000
30"	SB2930-000
36"	SB2936-000
42"	SB2942-000
48"	SB2948-000

DOOR CABINETS



Right-hinged door shown

Width	Right hinged	Left hinged
12"	SB2912-100R	SB2912-100L
15"	SB2915-100R	SB2915-100L
18"	SB2918-100R	SB2918-100L
24"	SB2924-100R	SB2924-100L



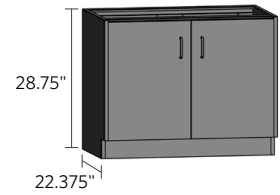
Width	Item Number
30"	SB2930-200
36"	SB2936-200
42"	SB2942-200
48"	SB2948-200



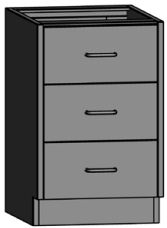
Width	Right hinged	Left hinged
30"	SB2930-100RSP	SB2930-100LSP
36"	SB2936-100RSP	SB2936-100LSP
42"	SB2942-100RSP	SB2942-100LSP
48"	SB2948-100RSP	SB2948-100LSP

base cabinets — sitting height

Sitting height cabinets are 28.75" high and 22.375" deep. Units are available in various widths as shown. Drawer units feature 100 lb. full extension slides as standard. Door units feature single shelf as standard. Additional shelves are available. Specify left- or right-hinged doors using the suffix "L" or "R". If locks are required, use the suffix "LK".



DRAWER CABINETS



Up to 24" wide



30" and wider

Width	Item Number
12"	SB2912-030
15"	SB2915-030
18"	SB2918-030
24"	SB2924-030
30"	SB2930-030
36"	SB2936-030
42"	SB2942-030
48"	SB2948-030



Up to 24" wide



30" and wider

Width	Item Number
12"	SB2912-040
15"	SB2915-040
18"	SB2918-040
24"	SB2924-040
30"	SB2930-040
36"	SB2936-040
42"	SB2942-040
48"	SB2948-040



Up to 24" wide



30" and wider

Width	Item Number
12"	SB2912-022
15"	SB2915-022
18"	SB2918-022
24"	SB2924-022
30"	SB2930-022
36"	SB2936-022
42"	SB2942-022
48"	SB2948-022



Up to 24" wide

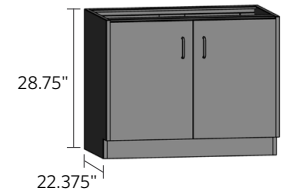


30" and wider

Width	Item Number
12"	SB2912-014
15"	SB2915-014
18"	SB2918-014
24"	SB2924-014
30"	SB2930-014
36"	SB2936-014
42"	SB2942-014
48"	SB2948-014

base cabinets — sitting height

Sitting height cabinets are 28.75" high and 22.375" deep. Units are available in various widths as shown. Drawer units feature 100 lb. full extension slides as standard. Door units feature single shelf as standard. Additional shelves are available. Specify left- or right-hinged doors using the suffix "L" or "R". If locks are required, use the suffix "LK".



DRAWER CABINETS



Up to 24" wide



30" and wider

Width	Item Number
12"	SB2912-006
15"	SB2915-006
18"	SB2918-006
24"	SB2924-006
30"	SB2930-006
36"	SB2936-006
42"	SB2942-006
48"	SB2948-006



Up to 24" wide



30" and wider

Width	Item Number
12"	SB2912-F02
15"	SB2915-F02
18"	SB2918-F02
24"	SB2924-F02
30"	SB2930-F02
36"	SB2936-F02
42"	SB2942-F02
48"	SB2948-F02



Up to 24" wide



30" and wider

Width	Item Number
15"	SB2915-FF0
18"	SB2918-FF0
24"	SB2924-FF0
30"	SB2930-FF0
36"	SB2936-FF0
42"	SB2942-FF0
48"	SB2948-FF0



Up to 24" wide

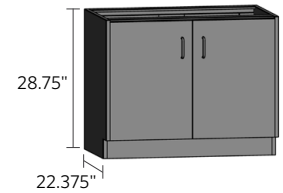


30" and wider

Width	Item Number
15"	SB2915-F10
18"	SB2918-F10
24"	SB2924-F10
30"	SB2930-F10
36"	SB2936-F10
42"	SB2942-F10
48"	SB2948-F10

base cabinets — sitting height

Sitting height cabinets are 28.75" high and 22.375" deep. Units are available in various widths as shown. Drawer units feature 100 lb. full extension slides as standard. Door units feature single shelf as standard. Additional shelves are available. Specify left- or right-hinged doors using the suffix "L" or "R". If locks are required, use the suffix "LK".



DRAWER CABINETS



Width	Item Number
30"	SB2930-060
36"	SB2936-060
42"	SB2942-060
48"	SB2948-060



Width	Item Number
30"	SB2930-044
36"	SB2936-044
42"	SB2942-044
48"	SB2948-044



Width	Item Number
30"	SB2930-080
36"	SB2936-080
42"	SB2942-080
48"	SB2948-080



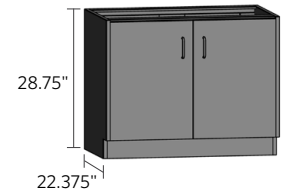
Width	Item Number
30"	SB2930-022A
36"	SB2936-022A
42"	SB2942-022A
48"	SB2948-022A



Width	Item Number
30"	SB2930-028
36"	SB2936-028
42"	SB2942-028
48"	SB2948-028

base cabinets — sitting height

Sitting height cabinets are 28.75" high and 22.375" deep. Units are available in various widths as shown. Drawer units feature 100 lb. full extension slides as standard. Door units feature single shelf as standard. Additional shelves are available. Specify left- or right-hinged doors using the suffix "L" or "R". If locks are required, use the suffix "LK".



DOOR/DRAWER CABINETS



Width	Right hinged	Left hinged
12"	SB2912-110R	SB2912-110L
15"	SB2915-110R	SB2915-110L
18"	SB2918-110R	SB2918-110L
24"	SB2924-110R	SB2924-110L

Right-hinged door shown



Width	Item Number
30"	SB2930-212A
36"	SB2936-212A
42"	SB2942-212A
48"	SB2948-212A

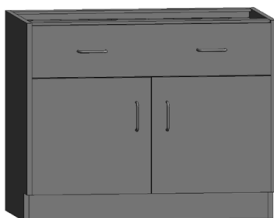


Width	Right hinged	Left hinged
12"	SB2912-102R	SB2912-102L
15"	SB2915-102R	SB2915-102L
18"	SB2918-102R	SB2918-102L
24"	SB2924-102R	SB2924-102L

Right-hinged door shown



Width	Item Number
30"	SB2930-202
36"	SB2936-202
42"	SB2942-202
48"	SB2948-202



Width	Item Number
30"	SB2930-210
36"	SB2936-210
42"	SB2942-210
48"	SB2948-210



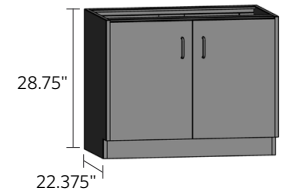
Width	Item Number
30"	SB2930-204
36"	SB2936-204
42"	SB2942-204
48"	SB2948-204



Width	Item Number
30"	SB2930-220
36"	SB2936-220
42"	SB2942-220
48"	SB2948-220

base cabinets — sitting height

Sitting height cabinets are 28.75" high and 22.375" deep. Units are available in various widths as shown. Drawer units feature 100 lb. full extension slides as standard. Door units feature single shelf as standard. Additional shelves are available. Specify left- or right-hinged doors using the suffix "L" or "R". If locks are required, use the suffix "LK".



DOOR/DRAWER CABINETS



Right-hinged door shown

Width	Right hinged	Left hinged
30"	SB2930-140R	SB2930-140L
36"	SB2936-140R	SB2936-140L
42"	SB2942-140R	SB2942-140L
48"	SB2948-140R	SB2948-140L



Right-hinged door shown

Width	Right hinged	Left hinged
30"	SB2930-130R	SB2930-130L
36"	SB2936-130R	SB2936-130L
42"	SB2942-130R	SB2942-130L
48"	SB2948-130R	SB2948-130L



Right-hinged door shown

Width	Right hinged	Left hinged
30"	SB2930-132AR	SB2930-132AL
36"	SB2936-132AR	SB2936-132AL
42"	SB2942-132AR	SB2942-132AL
48"	SB2948-132AR	SB2948-132AL

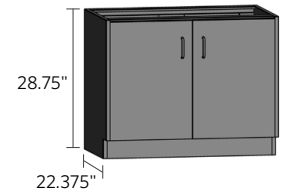


Right-hinged door shown

Width	Right hinged	Left hinged
30"	SB2930-132BR	SB2930-132BL
36"	SB2936-132BR	SB2936-132BL
42"	SB2942-132BR	SB2942-132BL
48"	SB2948-132BR	SB2948-132BL

base cabinets — sitting height

Sitting height cabinets are 28.75" high and 22.375" deep. Units are available in various widths as shown. Drawer units feature 100 lb. full extension slides as standard. Door units feature single shelf as standard. Additional shelves are available. Specify left- or right-hinged doors using the suffix "L" or "R". If locks are required, use the suffix "LK".



DOOR/DRAWER CABINETS



Right-hinged door shown

Width	Right hinged	Left hinged
30"	SB2930-210AR	SB2930-210AL
36"	SB2936-210AR	SB2936-210AL
42"	SB2942-210AR	SB2942-210AL
48"	SB2948-210AR	SB2948-210AL



Right-hinged door shown

Width	Right hinged	Left hinged
30"	SB2930-212CR	SB2930-212CL
36"	SB2936-212CR	SB2936-212CL
42"	SB2942-212CR	SB2942-212CL
48"	SB2948-212CR	SB2948-212CL



Right-hinged door shown

Width	Right hinged	Left hinged
30"	SB2930-124R	SB2930-124L
36"	SB2936-124R	SB2936-124L
42"	SB2942-124R	SB2942-124L
48"	SB2948-124R	SB2948-124L

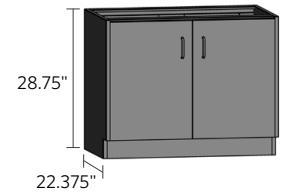


Right-hinged door shown

Width	Right hinged	Left hinged
30"	SB2930-124AR	SB2930-124AL
36"	SB2936-124AR	SB2936-124AL
42"	SB2942-124AR	SB2942-124AL
48"	SB2948-124AR	SB2948-124AL

base cabinets — sitting height

Sitting height cabinets are 28.75" high and 22.375" deep. Units are available in various widths as shown. Drawer units feature 100 lb. full extension slides as standard. Door units feature single shelf as standard. Additional shelves are available. Specify left- or right-hinged doors using the suffix "L" or "R". If locks are required, use the suffix "LK".



DOOR/DRAWER CABINETS



Right-hinged door shown

Width	Right hinged	Left hinged
30"	SB2930-122R	SB2930-122L
36"	SB2936-122R	SB2936-122L
42"	SB2942-122R	SB2942-122L
48"	SB2948-122R	SB2948-122L



Right-hinged door shown

Width	Right hinged	Left hinged
30"	SB2930-108R	SB2930-108L
36"	SB2936-108R	SB2936-108L
42"	SB2942-108R	SB2942-108L
48"	SB2948-108R	SB2948-108L



Right-hinged door shown

Width	Right hinged	Left hinged
30"	SB2930-114R	SB2930-114L
36"	SB2936-114R	SB2936-114L
42"	SB2942-114R	SB2942-114L
48"	SB2948-114R	SB2948-114L

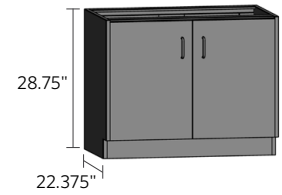


Right-hinged door shown

Width	Right hinged	Left hinged
30"	SB2930-116R	SB2930-116L
36"	SB2936-116R	SB2936-116L
42"	SB2942-116R	SB2942-116L
48"	SB2948-116R	SB2948-116L

base cabinets — sitting height

Sitting height cabinets are 28.75" high and 22.375" deep. Units are available in various widths as shown. Drawer units feature 100 lb. full extension slides as standard. Door units feature single shelf as standard. Additional shelves are available. Specify left- or right-hinged doors using the suffix "L" or "R". If locks are required, use the suffix "LK".



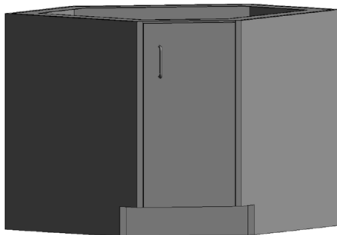
DOOR/DRAWER CABINETS



Right-hinged door shown

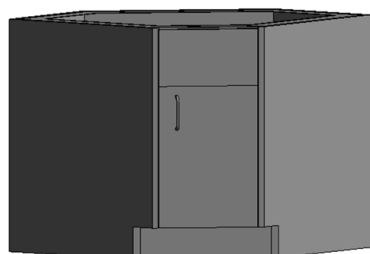
Width	Right hinged	Left hinged
30"	SB2930-116AR	SB2930-116AL
36"	SB2936-116AR	SB2936-116AL
42"	SB2942-116AR	SB2942-116AL
48"	SB2948-116AR	SB2948-116AL

CORNER CABINETS



Right-hinged door shown

Right hinged	Left hinged
SC2914-100R	SC2914-100L



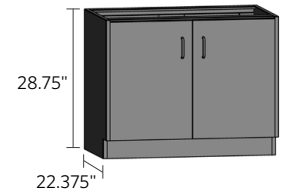
Right-hinged door shown

Right hinged	Left hinged
SC2914-10SR	SC2914-10SL

Right hinged with louvers	Left hinged with louvers
SC2914-10SAR	SC2914-10SAL

base cabinets — sitting height

Sitting height cabinets are 28.75" high and 22.375" deep. Units are available in various widths as shown. Drawer units feature 100 lb. full extension slides as standard. Door units feature single shelf as standard. Additional shelves are available. Specify left- or right-hinged doors using the suffix "L" or "R". If locks are required, use the suffix "LK".



SINK & FUME HOOD CABINETS



Right-hinged door shown

Width	Right hinged	Left hinged
15"	SB2915-10SR	SB2915-10SL
18"	SB2918-10SR	SB2918-10SL
24"	SB2924-10SR	SB2924-10SL

Width	Right hinged with louvers	Left hinged with louvers
15"	SB2915-10SAR	SB2915-10SAL
18"	SB2918-10SAR	SB2918-10SAL
24"	SB2924-10SAR	SB2924-10SAL

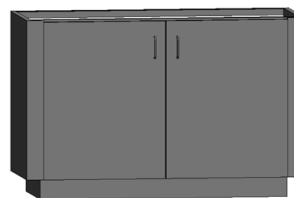


Width	Item Number
30"	SB2930-20P
36"	SB2936-20P
42"	SB2942-20P
48"	SB2948-20P
52"	SB2952-20P
58"	SB2958-20P

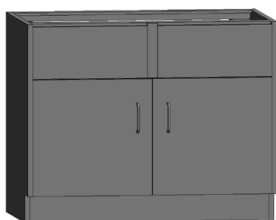


Right-hinged door shown

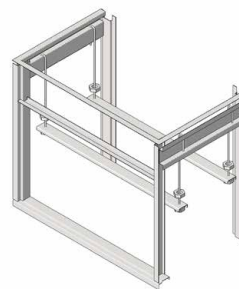
Width	Right hinged	Left hinged
15"	SB2915-10PR	SB2915-10PL
18"	SB2918-10PR	SB2918-10PL
24"	SB2924-10PR	SB2924-10PL



Width	Item Number
52"	SB2952-20PI
58"	SB2958-20PI

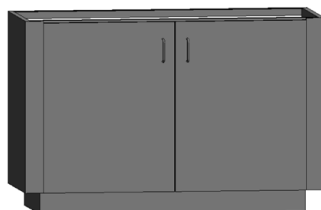


Width	Item Number
30"	SB2930-20S
36"	SB2936-20S
42"	SB2942-20S
48"	SB2948-20S
52"	SB2952-20S
58"	SB2958-20S



Sink Support Assembly

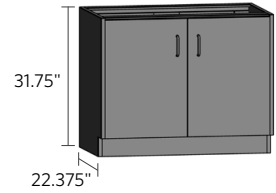
Item Number
SS-C14
SS-18
SS-24
SS-30
SS-36
SS-42
SS-48
SS-52
SS-58



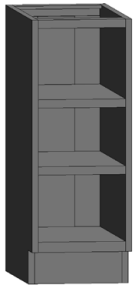
Width	Item Number
52"	SB2952-20SI
58"	SB2958-20SI

base cabinets — ADA height

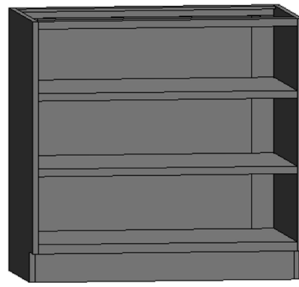
ADA height cabinets are 31.75" high and 22.375" deep. Units are available in various widths as shown. Drawer units feature 100 lb. full extension slides as standard. Door units feature single shelf as standard. Additional shelves are available. Specify left- or right-hinged doors using the suffix "L" or "R". If locks are required, use the suffix "LK".



OPEN CABINETS



Up to 24" wide



30" and wider

Width	Item Number
12"	SB3212-000
15"	SB3215-000
18"	SB3218-000
24"	SB3224-000
30"	SB3230-000
36"	SB3236-000
42"	SB3242-000
48"	SB3248-000

DOOR CABINETS



Right-hinged door shown

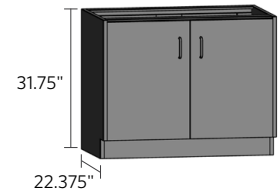
Width	Right hinged	Left hinged
12"	SB3212-100R	SB3212-100L
15"	SB3215-100R	SB3215-100L
18"	SB3218-100R	SB3218-100L
24"	SB3224-100R	SB3224-100L



Width	Item Number
30"	SB3230-200
36"	SB3236-200
42"	SB3242-200
48"	SB3248-200

base cabinets — ADA height

ADA height cabinets are 31.75" high and 22.375" deep. Units are available in various widths as shown. Drawer units feature 100 lb. full extension slides as standard. Door units feature single shelf as standard. Additional shelves are available. Specify left- or right-hinged doors using the suffix "L" or "R". If locks are required, use the suffix "LK".



DRAWER CABINETS



Up to 24" wide



30" and wider

Width	Item Number
12"	SB3212-030
15"	SB3215-030
18"	SB3218-030
24"	SB3224-030
30"	SB3230-030
36"	SB3236-030
42"	SB3242-030
48"	SB3248-030



Up to 24" wide



30" and wider

Width	Item Number
12"	SB3212-040
15"	SB3215-040
18"	SB3218-040
24"	SB3224-040
30"	SB3230-040
36"	SB3236-040
42"	SB3242-040
48"	SB3248-040



Up to 24" wide



30" and wider

Width	Item Number
12"	SB3212-F20
15"	SB3215-F20
18"	SB3218-F20
24"	SB3224-F20
30"	SB3230-F20
36"	SB3236-F20
42"	SB3242-F20
48"	SB3248-F20



Up to 24" wide

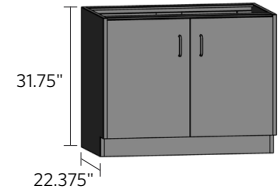


30" and wider

Width	Item Number
15"	SB3215-F12
18"	SB3218-F12
24"	SB3224-F12
30"	SB3230-F12
36"	SB3236-F12
42"	SB3242-F12
48"	SB3248-F12

base cabinets — ADA height

ADA height cabinets are 31.75" high and 22.375" deep. Units are available in various widths as shown. Drawer units feature 100 lb. full extension slides as standard. Door units feature single shelf as standard. Additional shelves are available. Specify left- or right-hinged doors using the suffix "L" or "R". If locks are required, use the suffix "LK".



DRAWER CABINETS



Width	Item Number
30"	SB3230-080
36"	SB3236-080
42"	SB3242-080
48"	SB3248-080



Width	Item Number
30"	SB3230-024
36"	SB3236-024
42"	SB3242-024
48"	SB3248-024



Width	Item Number
30"	SB3230-064
36"	SB3236-064
42"	SB3242-064
48"	SB3248-064

DOOR/DRAWER CABINETS



Width	Right hinged	Left hinged
12"	SB3212-110R	SB3212-110L
15"	SB3215-110R	SB3215-110L
18"	SB3218-110R	SB3218-110L
24"	SB3224-110R	SB3224-110L

Right-hinged door shown



Width	Item Number
30"	SB3230-220
36"	SB3236-220
42"	SB3242-220
48"	SB3248-220



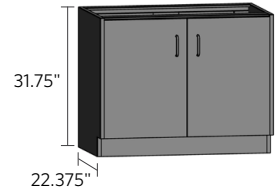
Width	Item Number
30"	SB3230-210
36"	SB3236-210
42"	SB3242-210
48"	SB3248-210



Width	Item Number
30"	SB3230-204A
36"	SB3236-204A
42"	SB3242-204A
48"	SB3248-204A

base cabinets — ADA height

ADA height cabinets are 31.75" high and 22.375" deep. Units are available in various widths as shown. Drawer units feature 100 lb. full extension slides as standard. Door units feature single shelf as standard. Additional shelves are available. Specify left- or right-hinged doors using the suffix "L" or "R". If locks are required, use the suffix "LK".



DOOR/DRAWER CABINETS



Right-hinged door shown

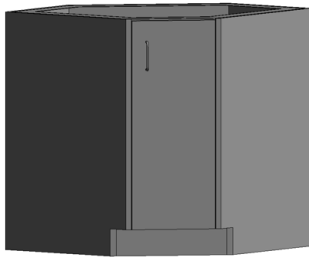
Width	Right hinged	Left hinged
30"	SB3230-142AR	SB3230-142AL
36"	SB3236-142AR	SB3236-142AL
42"	SB3242-142AR	SB3242-142AL
48"	SB3248-142AR	SB3248-142AL



Right-hinged door shown

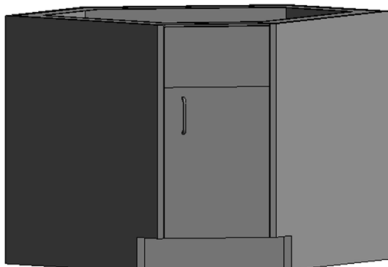
Width	Right hinged	Left hinged
30"	SB3230-150R	SB3230-150L
36"	SB3236-150R	SB3236-150L
42"	SB3242-150R	SB3242-150L
48"	SB3248-150R	SB3248-150L

CORNER CABINETS



Right-hinged door shown

Right hinged	Left hinged
SC3214-100R	SC3214-100L



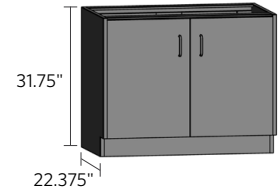
Right-hinged door shown

Right hinged	Left hinged
SC3214-10SR	SC3214-10SL

Right hinged with louvers	Left hinged with louvers
SC3214-10SAR	SC3214-10SAL

base cabinets — ADA height

ADA height cabinets are 31.75" high and 22.375" deep. Units are available in various widths as shown. Drawer units feature 100 lb. full extension slides as standard. Door units feature single shelf as standard. Additional shelves are available. Specify left- or right-hinged doors using the suffix "L" or "R". If locks are required, use the suffix "LK".

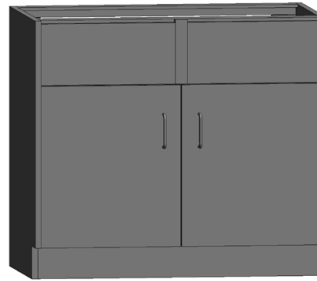


SINK & FUME HOOD CABINETS



Right-hinged door shown

Width	Right hinged	Left hinged
15"	SB3215-10SR	SB3215-10SL
18"	SB3218-10SR	SB3218-10SL
24"	SB3224-10SR	SB3224-10SL

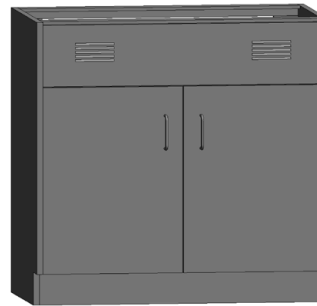


Width	Item Number
30"	SB3230-20S
36"	SB3236-20S
42"	SB3242-20S
48"	SB3248-20S
52"	SB3252-20S
58"	SB3258-20S

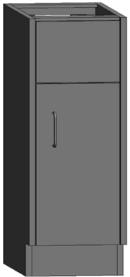


Left-hinged door shown

Width	Right hinged with louvers	Left hinged with louvers
15"	SB3215-10SAR	SB3215-10SAL
18"	SB3218-10SAR	SB3218-10SAL
24"	SB3224-10SAR	SB3224-10SAL

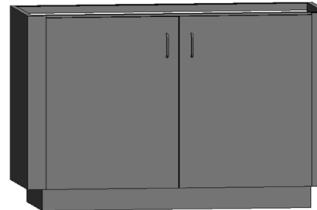


Width	Item Number (with louvers)
30"	SB3230-20SA
36"	SB3236-20SA
42"	SB3242-20SA
48"	SB3248-20SA
52"	SB3252-20SA
58"	SB3258-20SA



Right-hinged door shown

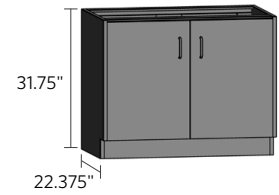
Width	Right hinged	Left hinged
15"	SB3215-10PR	SB3215-10PL
18"	SB3218-10PR	SB3218-10PL
24"	SB3224-10PR	SB3224-10PL



Width	Item Number
52"	SB3252-20SI
58"	SB3258-20SI

base cabinets — ADA height

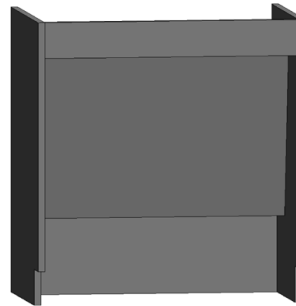
ADA height cabinets are 31.75" high and 22.375" deep. Units are available in various widths as shown. Drawer units feature 100 lb. full extension slides as standard. Door units feature single shelf as standard. Additional shelves are available. Specify left- or right-hinged doors using the suffix "L" or "R". If locks are required, use the suffix "LK".



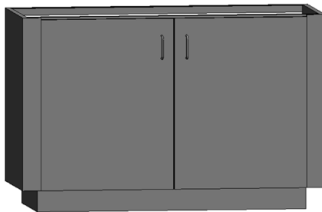
SINK & FUME HOOD CABINETS



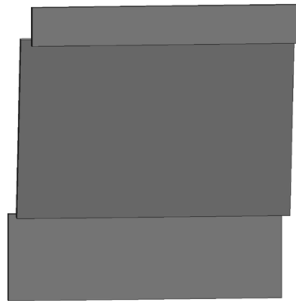
Width	Item Number
30"	SB3230-20P
36"	SB3236-20P
42"	SB3242-20P
48"	SB3248-20P
52"	SB3252-20P
58"	SB3258-20P



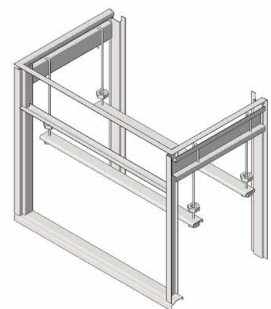
Width	Item Number
30"	SADAKSC30
36"	SADAKSC36
42"	SADAKSC42
48"	SADAKSC48



Width	Item Number
52"	SB3252-20PI
58"	SB3258-20PI

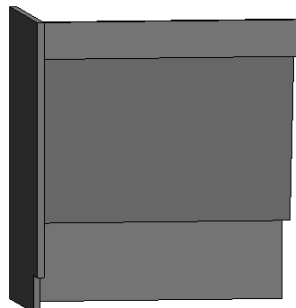


Width	Item Number
30"	SADAKSP30
36"	SADAKSP36
42"	SADAKSP42
48"	SADAKSP48

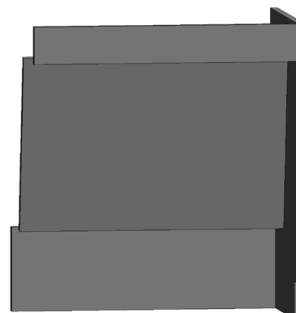


Sink Support Assembly

Item Number
SS-C14
SS-18
SS-24
SS-30
SS-36
SS-42
SS-48
SS-52
SS-58



Width	Item Number
30"	SADAKSCL30
36"	SADAKSCL36
42"	SADAKSCL42
48"	SADAKSCL48

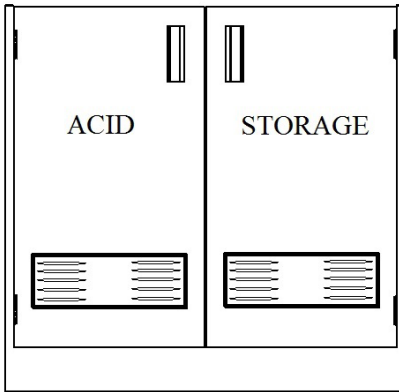


Width	Item Number
30"	SADAKSCR30
36"	SADAKSCR36
42"	SADAKSCR42
48"	SADAKSCR48

base cabinets — corrosives & flammables

Corrosives storage cabinets are reinforced steel with a hi-tech performance polymer alloy coating, which provides 100% coverage against corrosion. Cabinets are available in 18" and 22" depths. For 22" depth, add suffix "-22" to the part number.

CORROSIVES STORAGE CABINETS



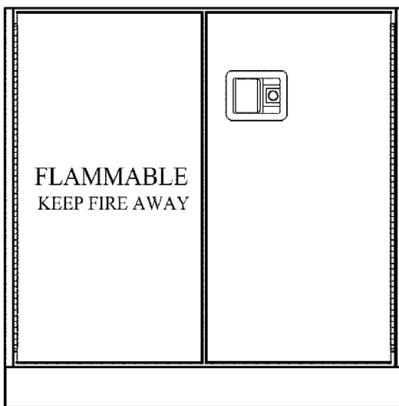
Width	Sitting Height	ADA Height	Standing Height
18"	SASB2918-100	SASB3318-100	SASB3518-100
24"	SASB2924-100	SASB3324-100	SASB3524-100
30"	SASB2930-200	SASB3330-200	SASB3530-200
36"	SASB2936-200	SASB3336-200	SASB3536-200
42"	SASB2942-200	SASB3342-200	SASB3542-200
48"	SASB2948-200	SASB3348-200	SASB3548-200
52"	SASB2952-200	SASB3352-200	SASB3552-200
58"	SASB2958-200	SASB3358-200	SASB3558-200

If a Vent Kit is required, use the suffix "VK".

Note: AMS recommends vent kits for all corrosives cabinets. Acids and bases should not be stored in the same cabinet.

Flammables storage cabinets are certified to meet NFPA 45 and are UL listed. Cabinets are available in 18" and 22" depths. For 22" depth, add suffix "-22" to the part number. For synchronized self-closing doors add "-SCC" to the part number.

FLAMMABLES STORAGE CABINETS



Width	Sitting Height	ADA Height	Standing Height
18"	SFSB2918-100	SFSB3318-100	SFSB3518-100
24"	SFSB2924-100	SFSB3324-100	SFSB3524-100
30"	SFSB2930-200	SFSB3330-200	SFSB3530-200
36"	SFSB2936-200	SFSB3336-200	SFSB3536-200
42"	SFSB2942-200	SFSB3342-200	SFSB3542-200
48"	SFSB2948-200	SFSB3348-200	SFSB3548-200
52"	SFSB2952-200	SFSB3352-200	SFSB3552-200
58"	SFSB2958-200	SFSB3358-200	SFSB3558-200

Mobile cabinets are available. Please contact your AMS representative.

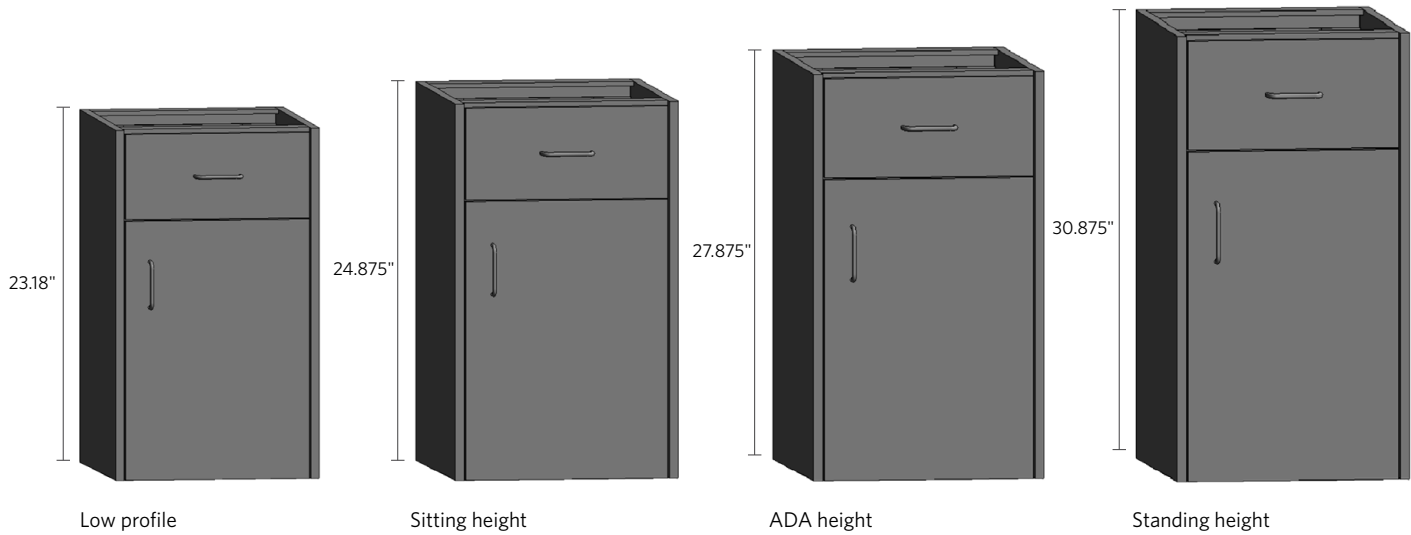
mobile cabinets

All AMS cabinets are available in a mobile version including low profile (27.18" high), sitting height (28.75" high), ADA height (31.75" high), and standing height (34.75" high). They come standard with a finished back and optional finished top. To specify a mobile cabinet use the prefix "M" to the base cabinet model number (example: MSB2724-110). They come standard with a 3" caster. 2" casters are available by adding the suffix "-2" to the part number. Cabinet depth with finished back is 22.812". All mobile cabinets with drawers come standard with a tip resistant counter weight.



hanging cabinets

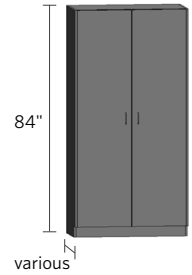
All AMS cabinets are available in a hanging version including low profile (23.18" high), sitting height (24.875" high), ADA height (27.875" high), and standing height (30.875" high). To specify a hanging cabinet use the prefix "H" to the base cabinet model number (example: HSB2324-110). Finished backs are optional and can be specified with the suffix "-FB". Low profile cabinets should be used for adjustable height work benches or table frames on casters to allow the caster to swivel if the adjustable leg is positioned in the lowest setting.



tall cabinets

Tall cabinets are 84" high and available in 16", 18", 21" or 24" deep by using the two digit suffix. Units are available in various widths as shown. Door units feature five shelves as standard. Additional shelves are available. Specify left- or right-hinged doors using the suffix "L" or "R" after the two digit depth number. If locks are required use the suffix "LK".

Wardrobe cabinets are available by adding the suffix "W" to any of the standard part numbers. They will include one hanging bar in lieu of shelves.



Up to 24" wide



30" and wider

Width	Item Number
18"	SF8418-000
24"	SF8424-000
30"	SF8430-000
36"	SF8436-000
42"	SF8442-000
48"	SF8448-000



Right-hinged door shown

Width	Right hinged	Left hinged
18"	SF8418-1SHR	SF8418-1SHL
24"	SF8424-1SHR	SF8424-1SHL



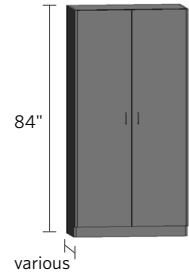
Right-hinged door shown

Width	Right hinged	Left hinged
18"	SF8418-1GHR	SF8418-1GHL
24"	SF8424-1GHR	SF8424-1GHL

tall cabinets

Tall cabinets are 84" high and available in 16", 18", 21" or 24" deep by using the two digit suffix. Units are available in various widths as shown. Door units feature five shelves as standard. Additional shelves are available. Specify left- or right-hinged doors using the suffix "L" or "R" after the two digit depth number. If locks are required use the suffix "LK".

Wardrobe cabinets are available by adding the suffix "W" to any of the standard part numbers. They will include one hanging bar in lieu of shelves.



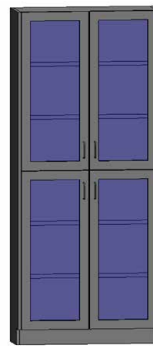
Width	Item Number
30"	SF8430-2SH
36"	SF8436-2SH
42"	SF8442-2SH
48"	SF8448-2SH



Width	Item Number
30"	SF8430-4SH
36"	SF8436-4SH
42"	SF8442-4SH
48"	SF8448-4SH



Width	Item Number
30"	SF8430-2SS
36"	SF8436-2SS
42"	SF8442-2SS
48"	SF8448-2SS



Width	Item Number
30"	SF8430-4GH
36"	SF8436-4GH
42"	SF8442-4GH
48"	SF8448-4GH



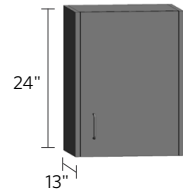
Width	Item Number
30"	SF8430-2GSF
36"	SF8436-2GSF
42"	SF8442-2GSF
48"	SF8448-2GSF



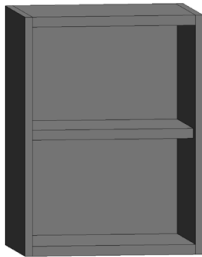
Width	Item Number
30"	SF8430-2GH
36"	SF8436-2GH
42"	SF8442-2GH
48"	SF8448-2GH

wall cabinets — 24" height

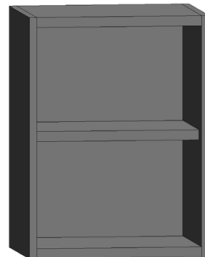
Wall cabinets are available in 24", 30", 36" and 48" heights and come standard with a 13" depth. For 16" deep cabinets, use the suffix "16". Units are available in various widths as shown. They feature one shelf as standard for 24" units. They feature two shelves as standard for 30" and 36" units. They feature three shelves as standard for 48" units. Specify left- or right-hinged doors using the suffix "L" or "R" after the two digit depth number. If locks are required, use the suffix "LK".



OPEN CABINETS



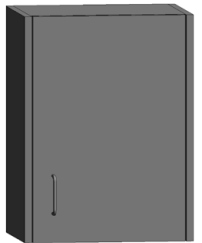
Up to 24" wide



30" and wider

Width	Item Number
18"	SW2418-000
24"	SW2424-000
30"	SW2430-000
36"	SW2436-000
42"	SW2442-000
48"	SW2448-000

STEEL-HINGED DOOR CABINETS



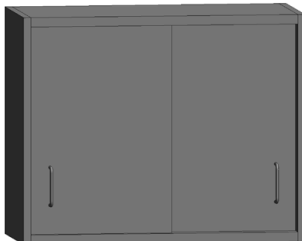
Width	Right hinged	Left hinged
18"	SW2418-1SHR	SW2418-1SHL
24"	SW2424-1SHR	SW2424-1SHL

Right-hinged door shown



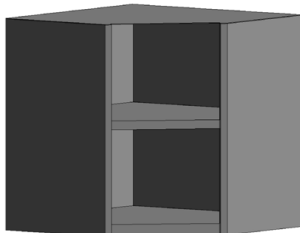
Width	Item Number
30"	SW2430-2SH
36"	SW2436-2SH
42"	SW2442-2SH
48"	SW2448-2SH

STEEL SLIDING DOOR CABINETS



Width	Item Number
30"	SW2430-2SS
36"	SW2436-2SS
42"	SW2442-2SS
48"	SW2448-2SS

CORNER CABINETS

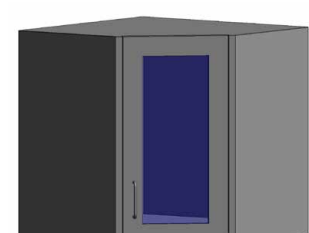


Item Number
SWC2418-000



Right-hinged door shown

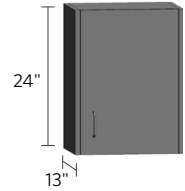
Right hinged	Left hinged
SWC2418-1SHR	SWC2418-1SHL



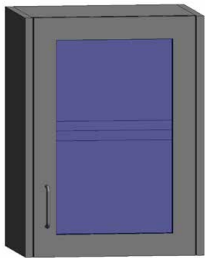
Right hinged	Left hinged
SWC2418-1GHR	SWC2418-1GHL

wall cabinets — 24" height

Wall cabinets are available in 24", 30", 36" and 48" heights and come standard with a 13" depth. For 16" deep cabinets, use the suffix "16". Units are available in various widths as shown. They feature one shelf as standard for 24" units. They feature two shelves as standard for 30" and 36" units. They feature three shelves as standard for 48" units. Specify left- or right-hinged doors using the suffix "L" or "R" after the two digit depth number. If locks are required, use the suffix "LK".

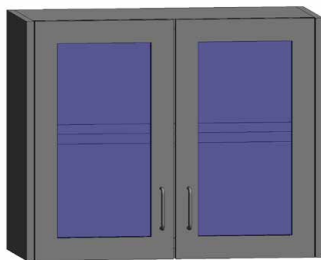


FRAMED GLASS HINGED DOOR CABINETS



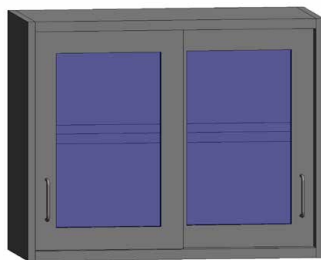
Right-hinged door shown

Width	Right hinged	Left hinged
18"	SW2418-1GHR	SW2418-1GHL
24"	SW2424-1GHR	SW2424-1GHL



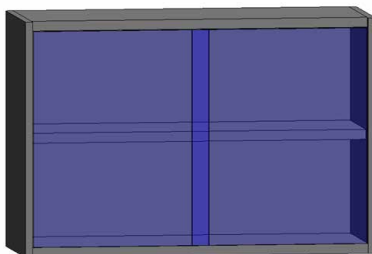
Width	Item Number
30"	SW2430-2GH
36"	SW2436-2GH
42"	SW2442-2GH
48"	SW2448-2GH

FRAMED GLASS SLIDING DOOR CABINETS



Width	Item Number
30"	SW2430-2GSF
36"	SW2436-2GSF
42"	SW2442-2GSF
48"	SW2448-2GSF

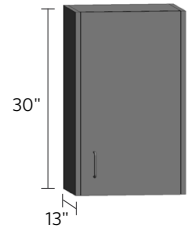
GLASS SLIDING DOOR CABINETS



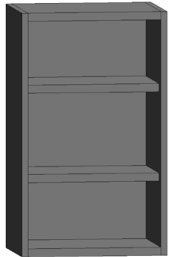
Width	Item Number
30"	SW2430-2GS
36"	SW2436-2GS
42"	SW2442-2GS
48"	SW2448-2GS

wall cabinets — 30" height

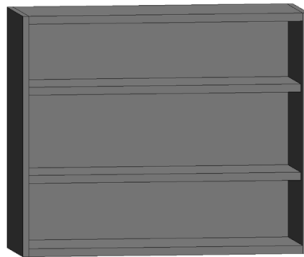
Wall cabinets are available in 24", 30", 36" and 48" heights and come standard with a 13" depth. For 16" deep cabinets, use the suffix "16". Units are available in various widths as shown. They feature one shelf as standard for 24" units. They feature two shelves as standard for 30" and 36" units. They feature three shelves as standard for 48" units. Specify left- or right-hinged doors using the suffix "L" or "R" after the two digit depth number. If locks are required, use the suffix "LK".



OPEN CABINETS



Up to 24" wide



30" and wider

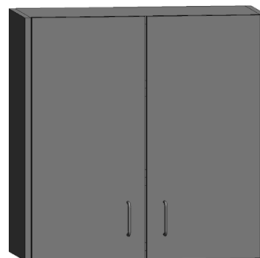
Width	Item Number
18"	SW3018-000
24"	SW3024-000
30"	SW3030-000
36"	SW3036-000
42"	SW3042-000
48"	SW3048-000

STEEL-HINGED DOOR CABINETS



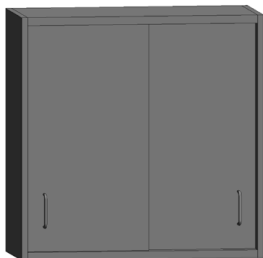
Width	Right hinged	Left hinged
18"	SW3018-1SHR	SW3018-1SHL
24"	SW3024-1SHR	SW3024-1SHL

Right-hinged door shown



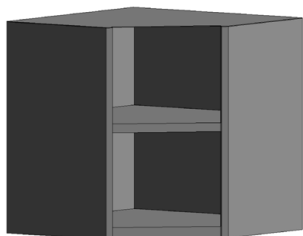
Width	Item Number
30"	SW3030-2SH
36"	SW3036-2SH
42"	SW3042-2SH
48"	SW3048-2SH

STEEL SLIDING DOOR CABINETS



Width	Item Number
30"	SW3030-2SS
36"	SW3036-2SS
42"	SW3042-2SS
48"	SW3048-2SS

CORNER CABINETS

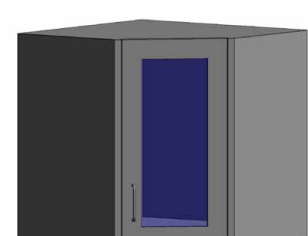


Item Number
SWC3018-000



Right-hinged door shown

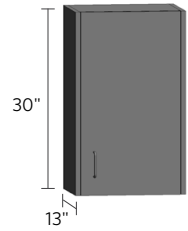
Right hinged	Left hinged
SWC3018-1SHR	SWC3018-1SHL



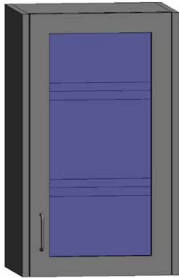
Right hinged	Left hinged
SWC3018-1GHR	SWC3018-1GHL

wall cabinets — 30" height

Wall cabinets are available in 24", 30", 36" and 48" heights and come standard with a 13" depth. For 16" deep cabinets, use the suffix "16". Units are available in various widths as shown. They feature one shelf as standard for 24" units. They feature two shelves as standard for 30" and 36" units. They feature three shelves as standard for 48" units. Specify left- or right-hinged doors using the suffix "L" or "R" after the two digit depth number. If locks are required, use the suffix "LK".

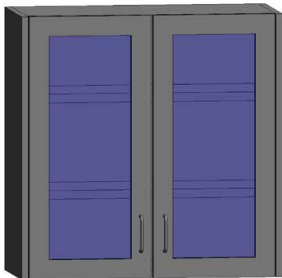


FRAMED GLASS HINGED DOOR CABINETS



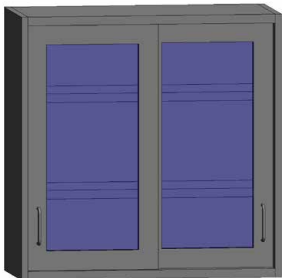
Right-hinged door shown

Width	Right hinged	Left hinged
18"	SW3018-1GHR	SW3018-1GHL
24"	SW3024-1GHR	SW3024-1GHL



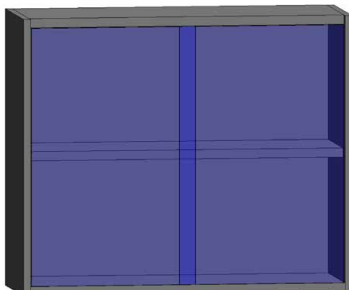
Width	Item Number
30"	SW3030-2GH
36"	SW3036-2GH
42"	SW3042-2GH
48"	SW3048-2GH

FRAMED GLASS SLIDING DOOR CABINETS



Width	Item Number
30"	SW3030-2GSF
36"	SW3036-2GSF
42"	SW3042-2GSF
48"	SW3048-2GSF

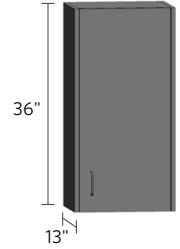
GLASS SLIDING DOOR CABINETS



Width	Item Number
30"	SW3030-2GS
36"	SW3036-2GS
42"	SW3042-2GS
48"	SW3048-2GS

wall cabinets — 36" height

Wall cabinets are available in 24", 30", 36" and 48" heights and come standard with a 13" depth. For 16" deep cabinets, use the suffix "16". Units are available in various widths as shown. They feature one shelf as standard for 24" units. They feature two shelves as standard for 30" and 36" units. They feature three shelves as standard for 48" units. Specify left- or right-hinged doors using the suffix "L" or "R" after the two digit depth number. If locks are required, use the suffix "LK".



OPEN CABINETS



Up to 24" wide



30" and wider

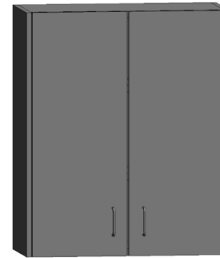
Width	Item Number
18"	SW3618-000
24"	SW3624-000
30"	SW3630-000
36"	SW3636-000
42"	SW3642-000
48"	SW3648-000

STEEL-HINGED DOOR CABINETS



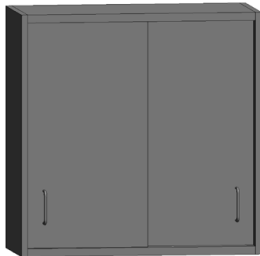
Width	Right hinged	Left hinged
18"	SW3618-1SHR	SW3618-1SHL
24"	SW3624-1SHR	SW3624-1SHL

Right-hinged door shown



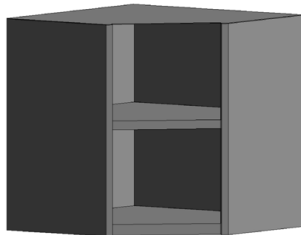
Width	Item Number
30"	SW3630-2SH
36"	SW3636-2SH
42"	SW3642-2SH
48"	SW3648-2SH

STEEL SLIDING DOOR CABINETS



Width	Item Number
30"	SW3630-2SS
36"	SW3636-2SS
42"	SW3642-2SS
48"	SW3648-2SS

CORNER CABINETS

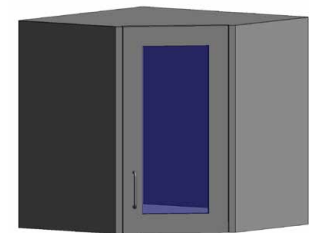


Item Number
SWC3618-000



Right-hinged door shown

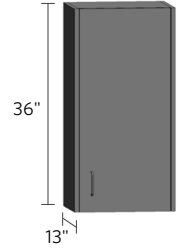
Right hinged	Left hinged
SWC3618-1SHR	SWC3618-1SHL



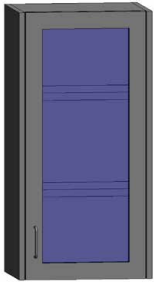
Right hinged	Left hinged
SWC3618-1GHR	SWC3618-1GHL

wall cabinets — 36" height

Wall cabinets are available in 24", 30", 36" and 48" heights and come standard with a 13" depth. For 16" deep cabinets, use the suffix "16". Units are available in various widths as shown. They feature one shelf as standard for 24" units. They feature two shelves as standard for 30" and 36" units. They feature three shelves as standard for 48" units. Specify left- or right-hinged doors using the suffix "L" or "R" after the two digit depth number. If locks are required, use the suffix "LK".

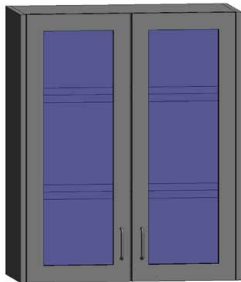


FRAMED GLASS HINGED DOOR CABINETS



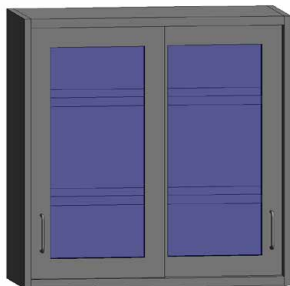
Right-hinged door shown

Width	Right hinged	Left hinged
18"	SW3618-1GHR	SW3618-1GHL
24"	SW3624-1GHR	SW3624-1GHL



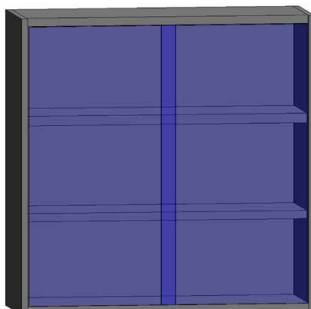
Width	Item Number
30"	SW3630-2GH
36"	SW3636-2GH
42"	SW3642-2GH
48"	SW3648-2GH

FRAMED GLASS SLIDING DOOR CABINETS



Width	Item Number
30"	SW3630-2GSF
36"	SW3636-2GSF
42"	SW3642-2GSF
48"	SW3648-2GSF

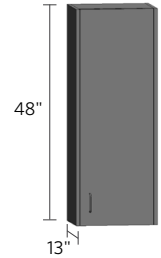
GLASS SLIDING DOOR CABINETS



Width	Item Number
30"	SW3630-2GS
36"	SW3636-2GS
42"	SW3642-2GS
48"	SW3648-2GS

wall cabinets — 48" height

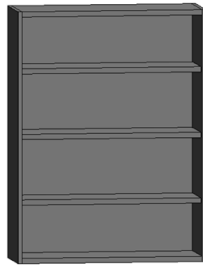
Wall cabinets are available in 24", 30", 36" and 48" heights and come standard with a 13" depth. For 16" deep cabinets, use the suffix "16". Units are available in various widths as shown. They feature one shelf as standard for 24" units. They feature two shelves as standard for 30" and 36" units. They feature three shelves as standard for 48" units. Specify left- or right-hinged doors using the suffix "L" or "R" after the two digit depth number. If locks are required, use the suffix "LK".



OPEN CABINETS



Up to 24" wide



30" and wider

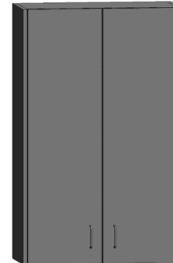
Width	Item Number
18"	SW4818-000
24"	SW4824-000
30"	SW4830-000
36"	SW4836-000
42"	SW4842-000
48"	SW4848-000

STEEL-HINGED DOOR CABINETS



Right-hinged door shown

Width	Right hinged	Left hinged
18"	SW4818-1SHR	SW4818-1SHL
24"	SW4824-1SHR	SW4824-1SHL



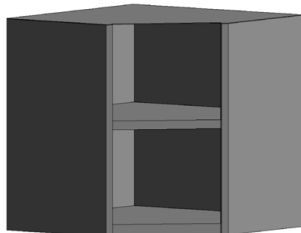
Width	Item Number
30"	SW4830-2SH
36"	SW4836-2SH
42"	SW4842-2SH
48"	SW4848-2SH

STEEL SLIDING DOOR CABINETS



Width	Item Number
30"	SW4830-2SS
36"	SW4836-2SS
42"	SW4842-2SS
48"	SW4848-2SS

CORNER CABINETS

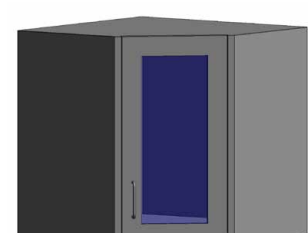


Item Number
SWC4818-000



Right-hinged door shown

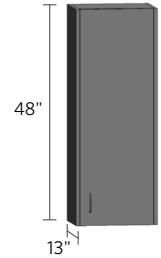
Right hinged	Left hinged
SWC4818-1SHR	SWC4818-1SHL



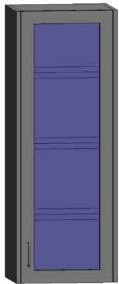
Right hinged	Left hinged
SWC4818-1GHR	SWC4818-1GHL

wall cabinets — 48" height

Wall cabinets are available in 24", 30", 36" and 48" heights and come standard with a 13" depth. For 16" deep cabinets, use the suffix "16". Units are available in various widths as shown. They feature one shelf as standard for 24" units. They feature two shelves as standard for 30" and 36" units. They feature three shelves as standard for 48" units. Specify left- or right-hinged doors using the suffix "L" or "R" after the two digit depth number. If locks are required, use the suffix "LK".

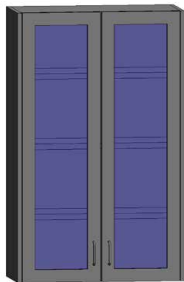


FRAMED GLASS HINGED DOOR CABINETS



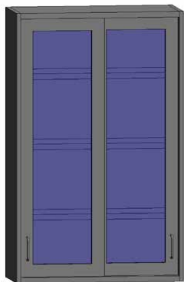
Right-hinged door shown

Width	Right hinged	Left hinged
18"	SW4818-1GHR	SW4818-1GHL
24"	SW4824-1GHR	SW4824-1GHL



Width	Item Number
30"	SW4830-2GH
36"	SW4836-2GH
42"	SW4842-2GH
48"	SW4848-2GH

FRAMED GLASS SLIDING DOOR CABINETS



Width	Item Number
30"	SW4830-2GSF
36"	SW4836-2GSF
42"	SW4842-2GSF
48"	SW4848-2GSF

GLASS SLIDING DOOR CABINETS

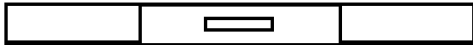


Width	Item Number
30"	SW4830-2GS
36"	SW4836-2GS
42"	SW4842-2GS
48"	SW4848-2GS

aprons



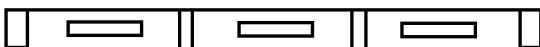
Width	Item Number	Item Number
24"	SA042422-000	SA042428-000
30"	SA043022-000	SA043028-000
36"	SA043622-000	SA043628-000
42"	SA044222-000	SA044282-000
48"	SA044822-000	SA044828-000
54"	SA045422-000	SA045428-000
60"	SA046022-000	SA046028-000
66"	SA046622-000	SA046628-000
72"	SA047222-000	SA047282-000



Width	Item Number	Item Number
24"	SA042422-001	SA042428-001
30"	SA043022-001	SA043028-001
36"	SA043622-001	SA043628-001
42"	SA044222-001	SA044282-001



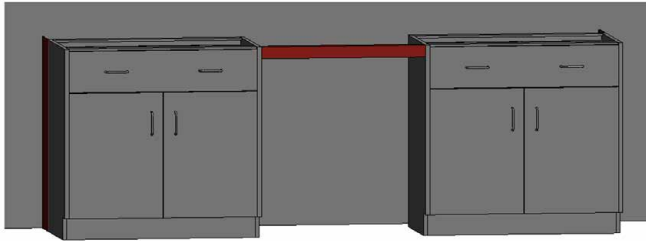
Width	Item Number	Item Number
42"	SA044222-002	SA044282-002
48"	SA044822-002	SA044828-002
54"	SA045422-002	SA045428-002
60"	SA046022-002	SA046028-002
66"	SA046622-002	SA046628-002
72"	SA047222-002	SA047282-002



Width	Item Number	Item Number
72"	SA047222-003	SA047282-003

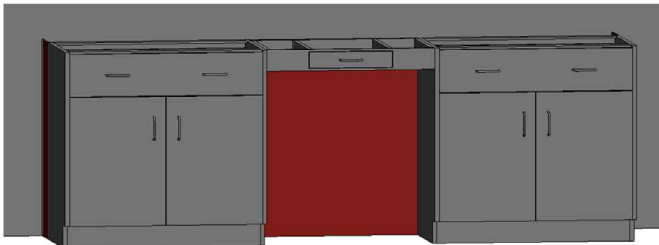
knee space rails and panels

KNEE SPACE RAILS



Item Number
SKSR0418
SKSR0424
SKSR0430
SKSR0436
SKSR0442
SKSR0448
SKSR0452
SKSR0454
SKSR0460
SKSR0466
SKSR0472
SKSR0484
SKSR0496

KNEE SPACE PANELS

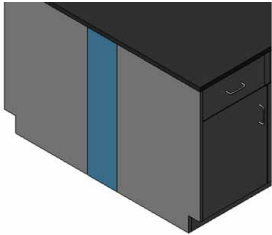


Item Number	Item Number	Item Number
SKSP2424	SKSP2924	SKSP3524
SKSP2430	SKSP2930	SKSP3530
SKSP2436	SKSP2936	SKSP3536
SKSP2442	SKSP2942	SKSP3542
SKSP2448	SKSP2948	SKSP3548
SKSP2454	SKSP2954	SKSP3554
SKSP2460	SKSP2960	SKSP3560
SKSP2466	SKSP2966	SKSP3566
SKSP2472	SKSP2972	SKSP3572

filler panels

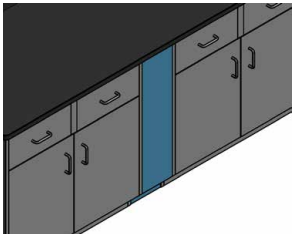
Base cabinet filler panels are available in 29", 32" and 35" high. Floor case filler panels are available in 84" high. They are all available in any width required by entering the dimension in lieu of the "XX" in the part number. Note: AMS base cabinets are 22.375" deep. (Example: SLF35-6.625)

C-FILLER



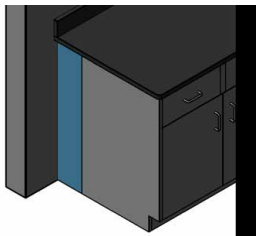
Item Number	Item Number	Item Number
SCF29-XX	SCF32-XX	SCF35-XX

C-FRONT FILLER



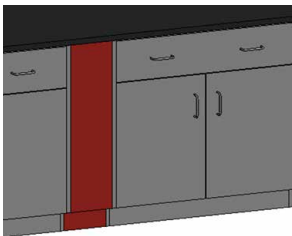
Item Number	Item Number	Item Number
SFFC29-XX	SFFC32-XX	SFFC35-XX

L-FILLER



Item Number	Item Number	Item Number
SLF29-XX	SLF32-XX	SLF35-XX

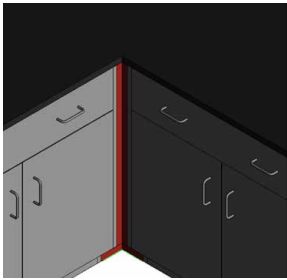
L-FRONT FILLER



Item Number	Item Number	Item Number
SFFL29-XX	SFFL32-XX	SFFL35-XX

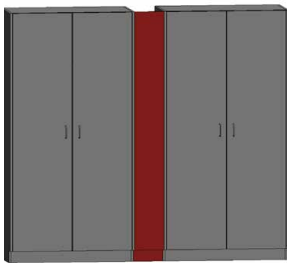
filler panels

CORNER FILLER



Item Number	Item Number	Item Number
SICF29-XX	SICF32-XX	SICF35-XX

FLOOR CASE FILLER



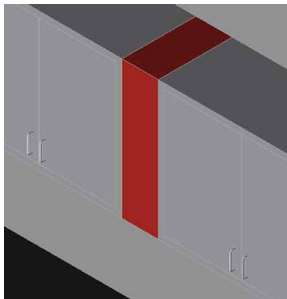
Item Number
SFFL84-XX

TOE SPACE FILLER



Item Number
STSF-XX

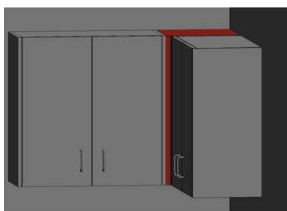
WALL CASE FRONT FILLER



Item Number	Item Number	Item Number	Item Number
SWCFF24-XX	SWCFF30-XX	SWCFF36-XX	SWCFF48-XX

Wall cabinet front filler panels are available in 24", 30", 36" and 48" high. They are all available in any width required by entering the dimension in lieu of the "XX" in the part number. To specify the depth use the suffix "-13" or "-16".

WALL CASE CORNER FILLER



Item Number	Item Number	Item Number	Item Number
SWCCF24	SWCCF30	SWCCF36	SWCCF48

accessories

END PEDESTALS

Item Number
SEP2902-22
SEP2902-28
SEP3502-22
SEP3502-28

TABLE LEGS

Item Number
SL29-22
SL29-28
SL35-22
SL35-28

SINGLE LEG

Item Number
SSL-29
SSL-35

SINGLE LEG WITH PLATE

Item Number
SSL-29P
SSL-35P

SLOPED TOP WITH END CAPS

Item Number	Item Number	Item Number
SST13-18	SST16-18	SST21-18
SST13-24	SST16-24	SST21-24
SST13-30	SST16-30	SST21-30
SST13-36	SST16-36	SST21-36
SST13-42	SST16-42	SST21-42
SST13-48	SST16-48	SST21-48

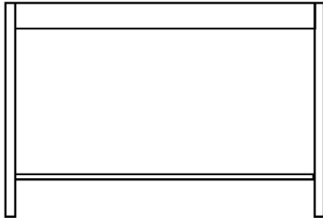
CORNER SLOPED TOP

Item Number
SST-Corner13
SST-Corner16
SST-Corner21

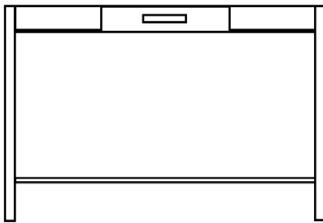
SHELVES

Item Number	Item Number	Item Number	Item Number
SWS1813	SWS1816	SFS1816	SFS1821
SWS2413	SWS2416	SFS2416	SFS2421
SWS3013	SWS3016	SFS3016	SFS3021
SWS3613	SWS3616	SFS3616	SFS3621
SWS4213	SWS4216	SFS4216	SFS4221
SWS4813	SWS4816	SFS4816	SFS4821

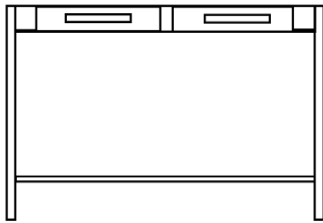
utility tables



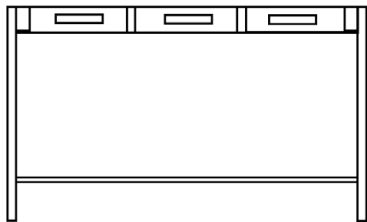
Width	Item Number	Item Number	Item Number	Item Number
24"	SUT292422-000	SUT292428-000	SUT352422-000	SUT352428-000
30"	SUT293022-000	SUT293028-000	SUT353022-000	SUT353028-000
36"	SUT293622-000	SUT293628-000	SUT353622-000	SUT353628-000
42"	SUT294222-000	SUT294282-000	SUT354222-000	SUT354282-000
48"	SUT294822-000	SUT294828-000	SUT354822-000	SUT354828-000
54"	SUT295422-000	SUT295428-000	SUT355422-000	SUT355428-000
60"	SUT296022-000	SUT296028-000	SUT356022-000	SUT356028-000
66"	SUT296622-000	SUT296628-000	SUT356622-000	SUT356628-000
72"	SUT297222-000	SUT297282-000	SUT357222-000	SUT357282-000



Width	Item Number	Item Number	Item Number	Item Number
24"	SUT292422-001	SUT292428-001	SUT352422-001	SUT352428-001
30"	SUT293022-001	SUT293028-001	SUT353022-001	SUT353028-001
36"	SUT293622-001	SUT293628-001	SUT353622-001	SUT353628-001
42"	SUT294222-001	SUT294282-001	SUT354222-001	SUT354282-001



Width	Item Number	Item Number	Item Number	Item Number
42"	SUT294222-002	SUT294282-002	SUT354222-002	SUT354282-002
48"	SUT294822-002	SUT294828-002	SUT354822-002	SUT354828-002
54"	SUT295422-002	SUT295428-002	SUT355422-002	SUT355428-002
60"	SUT296022-002	SUT296028-002	SUT356022-002	SUT356028-002
66"	SUT296622-002	SUT296628-002	SUT356622-002	SUT356628-002
72"	SUT297222-002	SUT297282-002	SUT357222-002	SUT357282-002



Width	Item Number	Item Number	Item Number	Item Number
72"	SUT297222-003	SUT297282-003	SUT357222-003	SUT357282-003



Air Master Systems Corp.

6480 Norton Center Drive, Muskegon, MI 49441 • 231.798.1111 • 231.798.4000 fax • airmastersystems.com